

DTC	C1779/79	CRANKSHAFT POSITION SENSOR CIRCUIT
------------	-----------------	---

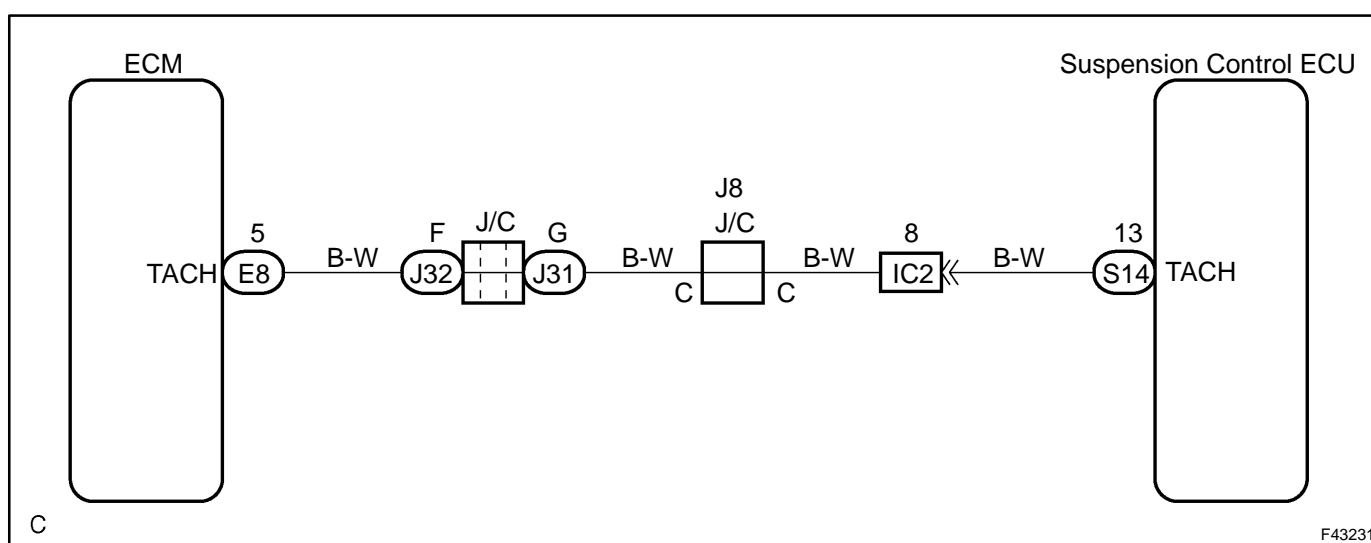
DTC	C1797/97	CRANKSHAFT POSITION SENSOR CIRCUIT
------------	-----------------	---

CIRCUIT DESCRIPTION

The suspension control ECU receives the engine speed signal from ECM.

DTC No.	DTC Detecting Condition	Trouble Area
C1779/79 C1797/97	TACH signal is not sent to suspension control ECU, and the vehicle is driven for 10 sec. or more at the speed of 30 km/h or higher.	<ul style="list-style-type: none"> • Crankshaft position sensor • Crankshaft position sensor circuit • ECM • Suspension control ECU

WIRING DIAGRAM



INSPECTION PROCEDURE

1 CHECK HARNESS AND CONNECTOR(SUSPENSION CONTROL ECU - ECM)

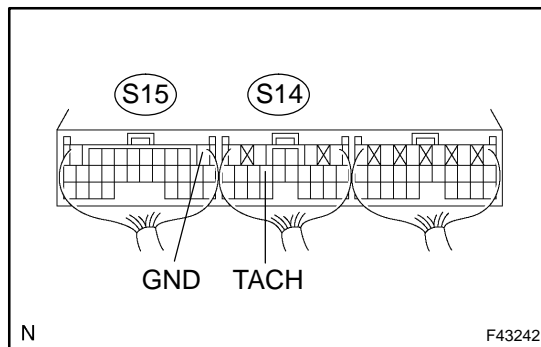
- (a) Check for open and short circuit in the harness and the connector between the suspension control ECU and the ECM (See page 01-35).

NG

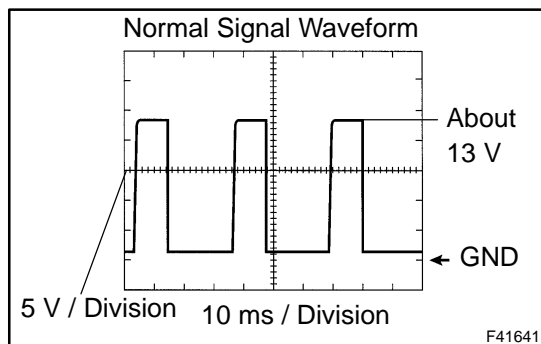
REPAIR OR REPLACE HARNESS OR CONNECTOR

OK

2 INSPECT SUSPENSION CONTROL ECU(TACH OUTPUT)



- (a) Remove the suspension control ECU with connector being connected.
 (b) Turn the ignition switch to ON.
 (c) Connect an oscilloscope to terminal S14-13 (TACH) and S15-14 (GND) of the suspension control ECU harness side connector.



- (d) With the engine idling, check the signal waveform.
Standard:
Signal waveform appears as shown in the illustration.
HINT:
 As the engine speed becomes higher, the waveform cycle gets shorter.

NG

CHECK AND REPLACE ECM (See page 01-35)

OK

CHECK AND REPLACE SUSPENSION CONTROL ECU (See page 01-35)